

**(5) Theo,Verstappen - Tom,du Chatinier [D10]**

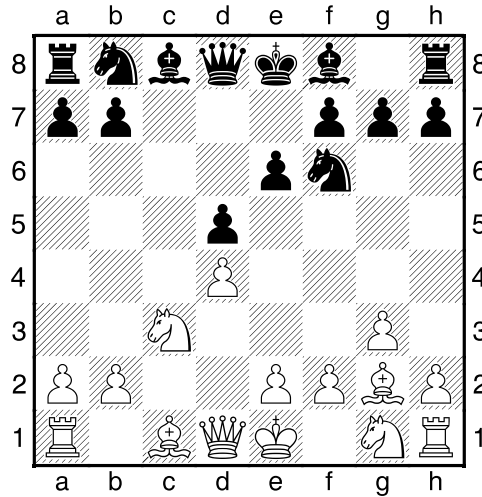
13.12.2015

[Deep Fritz 14 x64 (20m)]

[D10: Slavische Verdediging: 3 cxd5 (zonder vroege Pf3) en 3 Pc3]

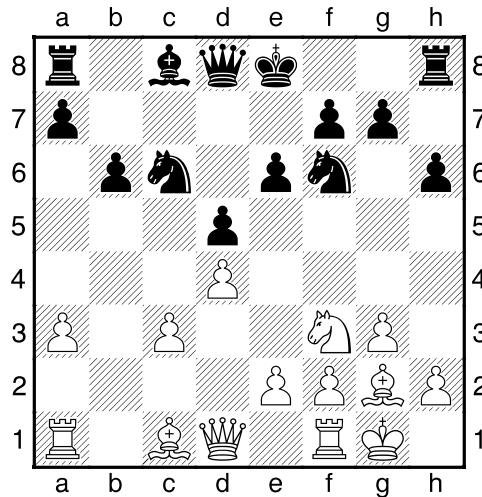
1.c4 c6 2.d4 d5 3.cxd5 cxd5 4.g3 Pf6 5.Lg2 e6 [laatste zet uit boek]

6.Pc3 [Diagram ]



6...Lb4 7.a3 Lxc3+ 8.bxc3 h6 [Beheerst g5]

9.Pf3 Pc6 10.0-0 b6 [Diagram ]

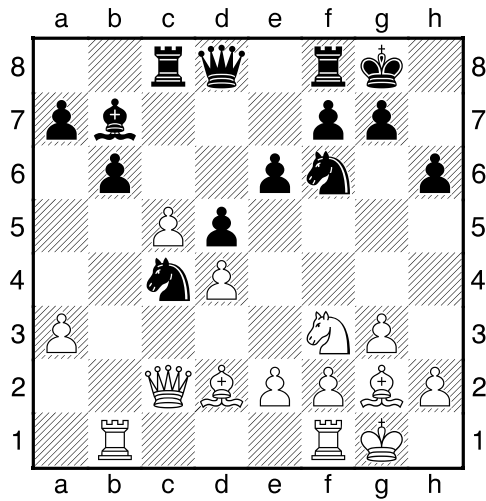


11.Tb1 0-0 12.Dc2 Lb7 13.c4 [13.Lf4 Tc8=]

13...Pa5 [13...dxc4 14.Dxc4 Pa5 15.Db5]

14.c5 [Wit krijgt meer ruimte.]

14...Tc8 15.Ld2 Pc4 [Diagram ]

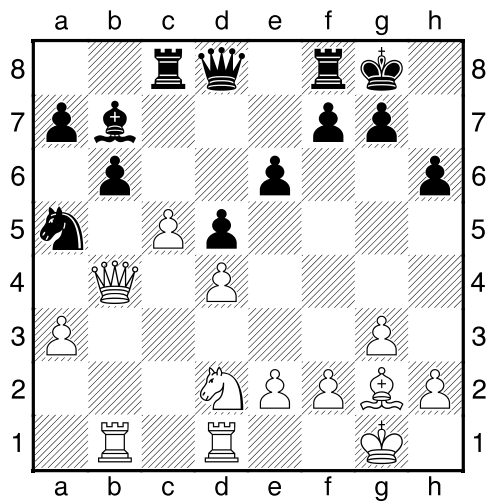


[Vervelend.]

16.Db3 Pe4 17.Tfd1 Pexd2 [17...Dd7 18.Pe5 Pxe5 19.Lxe4 dxe4 20.dxe5]

18.Pxd2= Pa5 [Zwart dreigt met materiaalwinst: Pa5xb3]

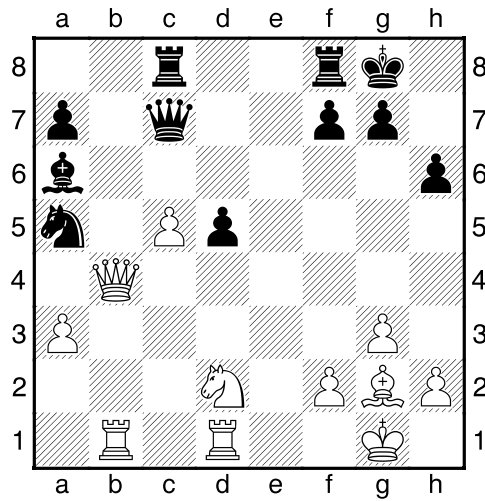
19.Db4 [Diagram ]



19...bxc5 20.dxc5 [Wit heeft een nieuwe gepasseerde pion: c5. ]

20...La6 21.e4 Dc7 [!21...d4!?= Is een interessant alternatief.]

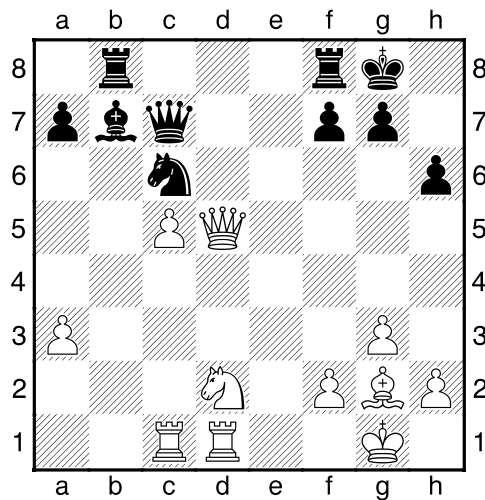
22.exd5± exd5 [Diagram ]



23.Tbc1 [23.Lxd5!? Le2 24.Te1 Dxc5 25.Lxf7+ Txf7 26.Txe2±]

23...Tb8 24.Dd4 Pc6? [!24...Tfd8= Ziet er nog speelbaar uit.]

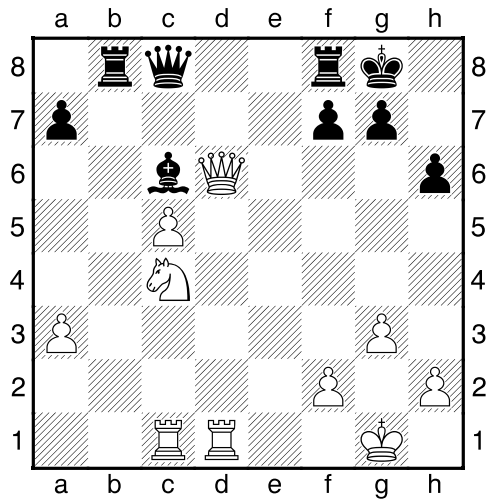
25.Dxd5± Lb7 [Diagram ]



[25...Pe5 26.Pe4±]

26.Dd6+– Dc8 27.Lxc6 [!27.Pc4+– Jammer dat wit deze uitstekende kans heeft gemist.]

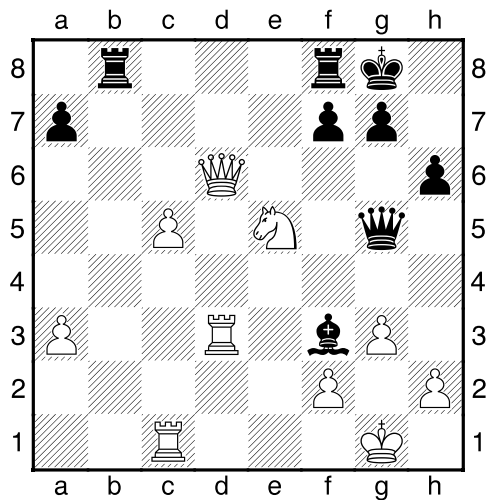
27...Lxc6± 28.Pc4 [Diagram ]



**28...Lf3** [28...Te8 29.Te1 Td8 30.Df4±]

**29.Td3 Dg4?** [!29...Le2 30.Td4 Lxc4 31.Tcxc4 Td8 32.Dxd8+ Dxd8 33.Txd8+ Txd8±]

**30.Pe5+– Dg5** [Diagram ]

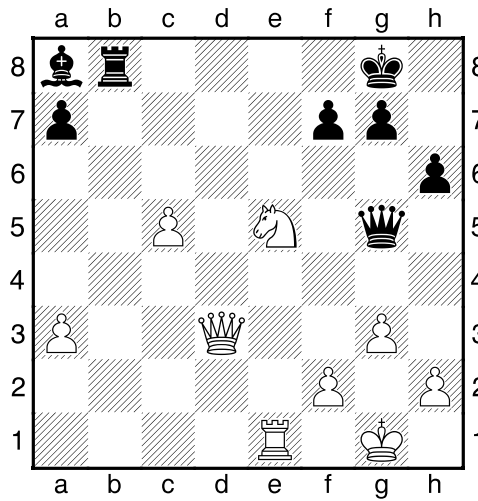


**31.Te1** [31.Te3 Le4 32.c6 Tbd8+–]

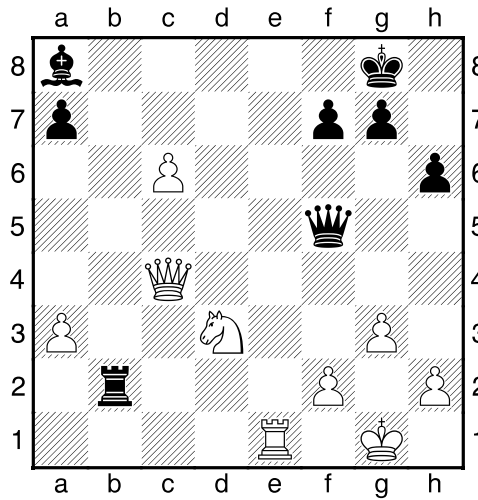
**31...Tfd8** [31...Tbd8 32.Da6 La8 33.c6 Txd3 34.Dxd3+–]

**32.Da6** [32.Dc7 Levert nog groter voordeel op. 32...Txd3 33.Dxb8+ Td8+–]

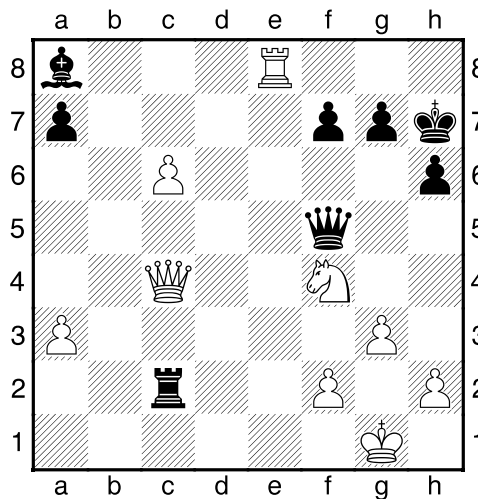
**32...Txd3 33.Dxd3 La8** [Diagram ]



34.Dc4 [34.c6!? De7 35.Dd7 Dxd7 36.Pxd7 Tc8+–]  
 34...Df5± 35.c6 Tb2 36.Pd3 [Diagram ]



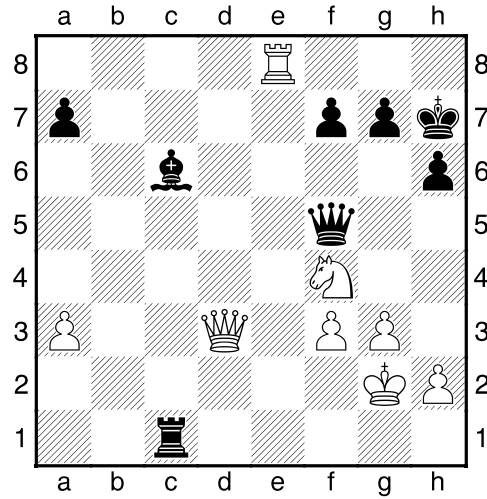
36...Td2 37.Te8+ Kh7 38.Pf4?? [Hierna heeft wit geen voordeel meer.]  
 [38.Txa8 Zou het leven van wit veel gemakkelijker hebben gemaakt. 38...Df3 39.Te8 Txd3 40.De4+ Dxe4 41.Txe4+–]  
 38...Tc2 [Diagram ]



Zwart dreigt met materiaalwinst: Tc2xc4]

39.Dd3?? [39.Te5! Was noodzakelijk.]

39...Tc1+--+ 40.Kg2 Lxc6+ 41.f3 [Diagram ]



41...Tc2+ 42.Kf1 [42.Dxc2 Anders kunnen de stukken meteen in de doos. 42...Dxc2+ 43.Te2--+]

42...Lb5 [42...Lb5 43.De2 g5--+]

0-1